

Hartzell land & locations, Franklin County, VA, 1792-1818

Philip Hartzell's 1792 land purchase, 1797 land sale, etc.

Print in landscape mode with all margins = 1.0".

Underlined on map below:

WILLIAM TONEY:

Presumed grandfather of Susannah Toney (m. George Hartzell 1809).

JOHN WEBSTER, SR.:

7 households before Adam Hartzell in 1810 Census.

(John Webster Jr. was 3 households before Adam in 1810 Census.)

Also nearby in 1810 Census were Luke and Samuel Webster.

JAMES McVEY:

2 households after Adam Hartzell in 1810 Census.

6 households before George Hartzell in 1810 Census.

WILLIAM GRIFFITH:

"George Griffith's line" in Philip's 1792 land document

MILL CREEK, LITTLE CREEK:

Philip Hartzell's 1792 land purchase was around here, probably near the beginning of Little Creek & over to Mill Creek

WILLIAM AKERS:

3 households after George Hartzell in 1810 Census.

Witness for Adam's son Jacob's will in 1837.

BOONE MILL:

Adam Hartzell's sister Elizabeth's daughter Clarisy Kinsey married Isaac Boone in 1817. Isaac bought the mill from Jacob and Daniel Boone, and lived at the mill. Jacob Boone's name is just above Boone Mill. See

archiver.rootweb.com/th/read/HARTSELL/1998-10/0909435616. Also

see HENRY KINSEY.

HENRY KINSEY:

Probably related to Jacob Kinsey/Kinzie who married Adam Hartzell's sister Elizabeth Sept. 11, 1798. Henry's wife's name was Eve. An 1804 deed mentions "a branch of Little Creek". Jacob's parents seems to have been Johannes and Chloe Kinsey.

MOSES RENTFRO:

Grandfather of Moses who married Adam's daughter Elizabeth 1818 Ohio. William was Moses' father.

NATHANIEL CLAIBORNE:

Witness to Abraham Hartzell 1839 will, Franklin County VA.

Member of Congress.

MOSES GREER:

Witness to recording of Philip's 1792 land purchase.

His land was adjacent to Abraham Hartzell's 1796 land purchase.

Moses Greer Jr. was county recorder in 1818.

JAMES CALLAWAY:

County recorder for Philip's 1792 land purchase;

his heirs sold land to Adam's son Jacob in 1818,

land bordered by George Hartzell's, Toney's, and John Webster's land

STEPHEN SINK:

Probable brother of Christina Sink who married Adam Hartzell.

See www-personal.umich.edu/~cgaunt/etc/Sink0416.txt

CHURCHES MARKED:

Possible churches attended - Antioch Church at Dugwell?

Width of map is about 20 miles.

[Click here for a pop-up USGS map of the area of Philip Hartzell's land, contributed by Paul Swan.](#)



Philip Hartzell's 1792 land purchase:

NOTE: 150 acres is about 1/3 the size of the rectangle for Boone Mill, and if square, almost 1/2 mile on a side (almost a quarter section). Since the land touched or crossed both Little Creek and Mill Creek, it had to be where the creeks were about half a mile apart at that time. It was also adjoining George Griffith's land, and a William Griffith is shown on the map. According to a USGS map, the branch of creek south of Bunker Hill was part of Little Creek. The branch to the left of the name Conrad Harkrader could be Fox Branch. I would say the land was at the red X, just southwest of Boone Mill, and 8 or 9 miles NNW of Rocky Mount.

"This Indenture made this Sixth day of February, one thousand Seven hundred & ninety two between Daniel Dillman of the County of Franklin of the one part and Phillip Hartzell of the same County of the other part Witness that he the said Daniel Dillman for and in Consideration of Sum of One Hundred & Sixty pounds Current money of Virginia to him in hand paid by the he(?) the Said Phillip Hartzell the Receipt(?) where of the said Daniel Dillman doth hereby acknowledge hath granted and Sold and by this presents doth grant Bargain and sell, Deliver & Confirm unto him the said Phillip Hartzel his heirs and assigns for ever one Certain(?) Tract or parcel of land containing one hundred fifty acres more or less lying and being on the Mill Creek, and bounded as follows to wit. Beginning at a poplar tree on a Branch which is called Fox Branch, thence down the same (branch) to a poplar Corner tree, thence to a Corner white oak then in bound by Spencer's old line on the south side of Little Creek to a corner Black Oak, from thence to a Corner Black Oak from thence continuing George Griffith's line thence bounded by Jacob Dillman's line & from thence William Spencer's new line agreement to Corner white oak from thence continuing the old line to a Chestnut tree on the east side of the Mill Creek from thence with the said line to a white Oak on the top of the hill North following the same Old line to pointer, from thence with it to a Black Oak on North side of (Fox?) Branch from there to first Station." ...

Witnesses: Moses Greer, Chattin? Pollard?, Moses Greer Jr.

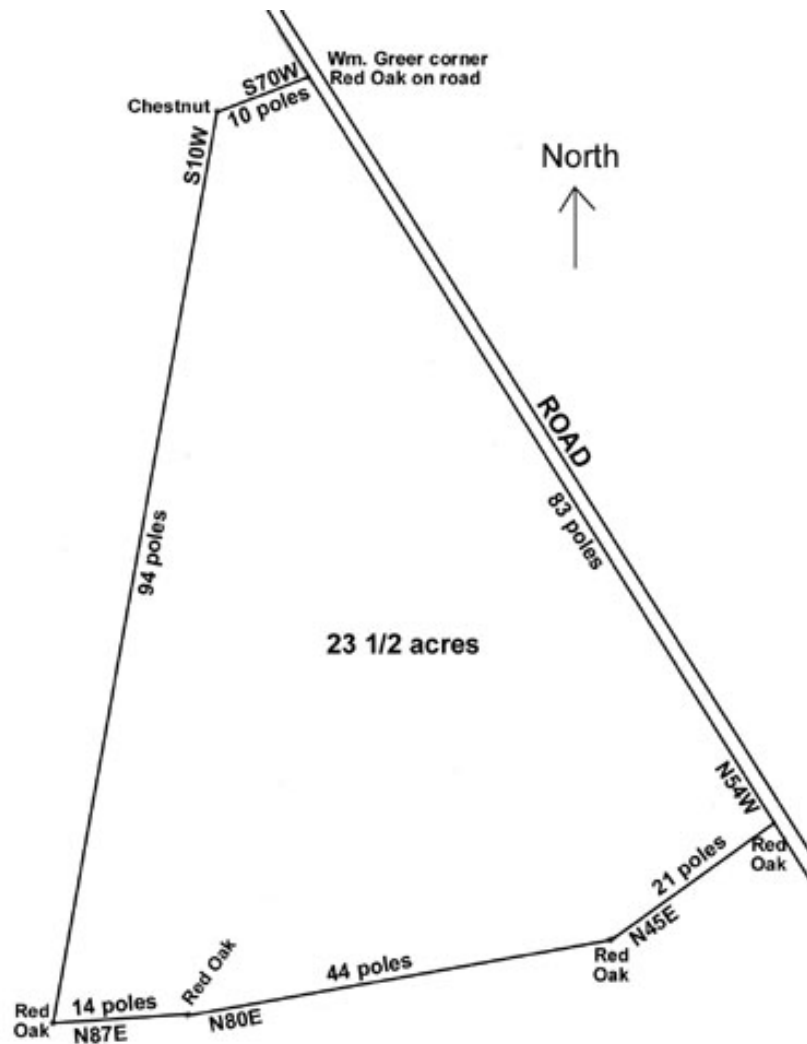
Philip Hartzell's 1797 land SALE:

On Feb. 24, 1797, Philip Hartzell sold 18 acres to George Harter for 40 pounds. This land is presumably part of his 1792 land purchase described above.

Some parts of the metes & bounds land description is hard to read, but by checking letters and numbers against other parts of the document, and making sure it comes out to about 18 acres, my estimation is below. Not knowing the path of the stream, I used basic geometry to work backward from the Harter Corner Stump to the upstream Poplar tree.

... a parcel of land lying and being in Franklin County on Fox Branch a Branch of Mill Creek and bounded thus beginning at the said Harter Corner Stump,
 South 18 poles to a Hickory,
 South 54 West 18 poles to a Dogwood on the branch (54 degrees west of south),
 thence up the same as it meanders to a Poplar,
 North 24 West 14 poles to a Black Oak,
 North 69 East 79 poles to a White Oak,
 South 40 East 24 poles to the beginning,
 containing 18 acres.

I drew the creek last. In metes and bounds descriptions, the beginning and end rarely meet due to variations in measuring and compass



From Wm. Greer Corner Red Oak on the Road,
 thence South 70 West 10 poles to a Chestnut,
 South 10 West 94 poles to a Red Oak (looks like the 74 was corrected to 94),
 North 87 East 14 poles to a Red Oak,
 North 80 East 44 poles to a Red Oak,
 North 45? East 21? poles to a Red Oak on the road,
 thence up the road North, North 54 West 83 (poles) to the Beginning.

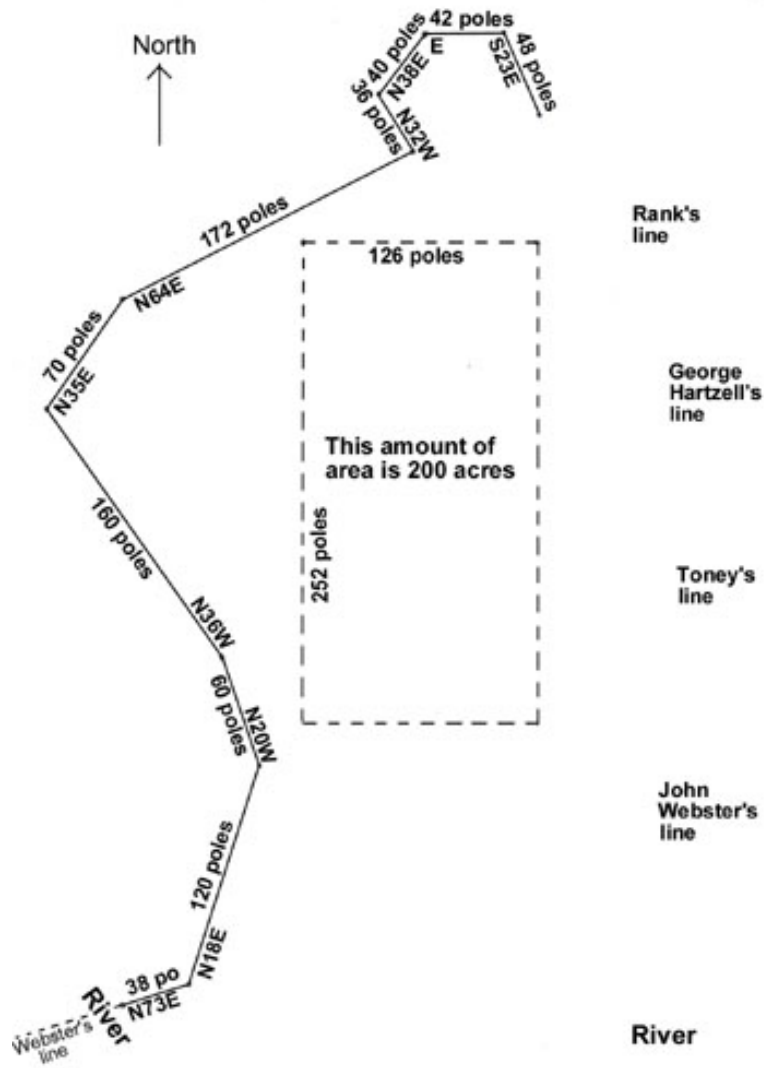
Here I drew the road last, and it came out at North 30 West, not North 54 West as specified in the land record. Again, the beginning and end of a metes and bounds description don't usually meet. I will try to redraw, but in the meantime it's not that important. A rough estimation of the area of this drawing comes out to about 20 acres, so that's fairly close. All we need for this one is a general idea of the shape and location of the land.

Jacob Hartzell's (m. Hannah Capper 1816) 1818 land purchase:

Jacob Hartzell was Adam's son. Jacob stayed behind in Virginia when the family moved to Ohio in 1815. On October 3, 1818, it appears that the Executors of James Callaway, deceased, sold 200 acres of Callaway land to Jacob Hartzell for \$100.00. Interestingly, it was bounded by land belonging to Webster, George Hartzell, Toney, and John Webster. This George Hartzell must be the one who married Susannah Toney in 1809.

Beginning at a White Oak on the River (Blackwater River?),
off with Webster's line North 73 East 38 poles to a white oak,
North 18 East 120 poles to a red oak,
North 20 West 60 poles to a red oak,
North 36 West 160 poles to pointers,
off new lines North 35 East 70 poles to a chesnut oak,
North 64 East 172 poles to a chesnut tree,
North 32 West 36 poles to a white oak,
North 38 East 40 poles to a red oak,
East 42 poles to 2 chesnut trees,
South 23 East 48 poles to a chesnut tree,
thence with it to Rank's line,
with it to George Hartzel's line (who m. Susannah Toney?),
with it to Toney's line,
with it to John Webster's line,
with it to the river,
thence up the same as it meanders to the Beginning (notice UP stream).

DRAWING BELOW NOT TO SCALE OF ABOVE DRAWINGS



Many thanks to my brother Robert Hartsell for finding the land records and Settlement Map at Rocky Mount, Virginia in 1986, long before we knew this was our family.